

THE  
WESTON TURVILLE TIMES

*Winter Edition*

2023



Dear Father Christmas

For Christmas I would like  
some volunteers to help deliver  
this magazine, else it might  
have to stop next year.

Sincerely yours  
The Editor



*multi award winning agent*



Florence Nightingale Proud Sponsors  
HOSPICE CHARITY

**01296 625 100**

[www.harpersestateagents.co.uk](http://www.harpersestateagents.co.uk)

## Message from the Editor

---

Hello, and welcome to the Winter edition for 2023.

The nights are drawing in and the weather has turned cold. I hope you enjoy reading this issue sitting in your comfy chair with a nice hot cup of cocoa (or whatever your tittle). Turn the pages and you will find some tips and advice specifically aimed for this time of year, as well as information on “What’s On?”.

I am delighted the Weston Turville Times continues to be so well received by the community. However, as the cover suggests, this could be the last printed copy of the magazine before it is only available to read online. Volunteers are sought to help deliver this wonderful magazine around our parish. So, if you can help, read the plea over the page which has all the details.

The aim, has always been, to bring you as much local information as possible. This can only be achieved by contributions from residents, organisations and businesses about what’s happening in our area.

I would like to thank everyone who has been involved in contributing, producing, and delivering the Weston Turville Times for 2023 and for their continued support of a local publication – it could not be done without any of you.

Wishing you and yours a very Merry Christmas and Happy New Year.

Jules - Editor

*Contributions are welcomed subject to space and the Editor’s decision on suitability. The deadline for the next issue is 31<sup>st</sup> January 2024. We reserve the right to edit all articles.*

The Weston Turville Times is a community magazine for the parish of Weston Turville. It is published quarterly by Weston Turville Parish Council and distributed free of charge to every house and many businesses in Weston Turville. Past editions can be found on the Parish Council website - [www.westonturville-pc.gov.uk](http://www.westonturville-pc.gov.uk).

*The views expressed in articles are not necessarily the views of the editorial team or the Parish Council. We do not endorse any of the suppliers advertising in the magazine.*

### Published by

Weston Turville Parish Council  
Village Hall, School Approach, Weston Turville  
HP22 5RW

Tel: 01296 612838  
[clerk@westonturville-pc.gov.uk](mailto:clerk@westonturville-pc.gov.uk)

### Editor

[c/o clerk@westonturville-pc.gov.uk](mailto:c/o_clerk@westonturville-pc.gov.uk)

### Advertising

Michael Foote  
[wt-advertising@westonturville-pc.gov.uk](mailto:wt-advertising@westonturville-pc.gov.uk)

### Printed by

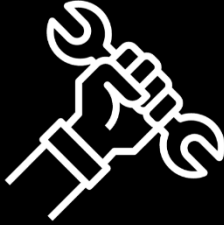
Buxton Press, Palace Road, Buxton SK17 6AE

### Advertising rates for one year:

Whole Page	£250
Half page	£125
Quarter page	£65

# Fix my street

Got a problem to report?



Potholes  
Pavement issues  
Street lights  
Road signs  
Fly tipping  
Graffiti  
Dog fouling  
and more....



**Don't wait**

Report them by downloading the app  
or visiting

[www.fixmystreet.com](http://www.fixmystreet.com)

**Are you fed up with speeding  
vehicles in your area?**

**Can you volunteer?**

**Can you spare an hour a week or  
monthly to help?**

**We can arrange community speedwatch training to  
help tackle speeding in your local area.**



**Contact us for more information,  
email  
[Clerk@westonturville-pc.gov.uk](mailto:Clerk@westonturville-pc.gov.uk)**



# IS THIS THE LAST ISSUE OF THE WESTON TURVILLE TIMES TO BE DELIVERED TO YOUR HOME?

We are in urgent need of new volunteers to deliver the Weston Turville Times following long standing volunteers having to give up their rounds.

***Without volunteers the magazine will cease as a printed issue and only be available online.***

The magazine is published four times per year, each round takes an hour or less to complete.

We need volunteers to cover:

Aston Clinton Road  
New Road (A41 end)  
Farendon Fields  
Aston Reach

If you can help please email [clerk@westonturville-pc.gov.uk](mailto:clerk@westonturville-pc.gov.uk)

## Report from the Chair

Hello everyone and welcome to the Winter Edition of WTT. Where has the year gone ..... like me, some of you may have already written your Christmas cards, posted those to loved ones far away and wrapped up your Christmas gifts.

I would like to take the opportunity of thanking Ernesto Martinez for his commitment and dedication as both the Editor of the WTT and a Parish Councillor. So, if you are an enthusiastic individual with an interest in our village and its residents, we now have a vacancy on the Parish Council so please consider applying.

I would also like to thank all the Parish Councillors - who volunteer - for their time, commitment and resilience this year; our two Clerks who both do a superb job; the fabulous volunteers for their time and commitment.

Before we see the end of 2023, I wanted to take the opportunity to share the progress which has been made on a few of the many projects currently being worked on:

**Jubilee Park Path** - discussions with external parties have taken place to identify and gain a better understanding as to the cause of the path becoming muddy during prolonged wet weather and an appropriate solution to resolve the winter weather issues of the path walk around the park. At the time of writing we are awaiting their report and recommendations.

**Replacement Field Gates/stiles** – The Parish Council is working with the Ramblers Association on a programme of replacement for some of the older stiles. The first to be replaced are between Worlds End Lane and Wendover Road, the landowner has given their consent and the Ramblers will be carrying out the work over winter.

**Village Hall Café** - The architect plans to convert the unused changing rooms to a café for the community were reviewed and agreed at the Parish Council meeting in October. These plans will be submitted to Buckinghamshire Council for their consideration before Christmas.

**Flower Meadow, jubilee Park** - Additional yellow rattle will be sown during the winter months to further reduce the volume of grass, additional flower mix will be ordered in the spring. We are working in partnership with the Chiltern Society on this and other projects.

**Hampden Fields** - See update in this edition. Monthly meetings are held with the project manager for the site, updates are published on the Parish Council Website monthly. A number of reserved matters applications have been submitted and are currently being considered by Buckinghamshire Council with more expected shortly.

**The Glebe Field** - Progress update appears in this edition regarding the work undertaken to the right of way across the field. Updates will be periodically published on the Parish Council Website.

**Recreation ground** - Thank you to everyone who took the opportunity to complete our survey in the Winter 2022 edition of WTT. Listed below is a brief overview of progress to date:

**Outdoor Table Tennis Table** - The Parish Council discussed and agreed at the October meeting, the make/model, costs associated with purchasing and installing the table which will be located by the MUGA.

**Tree Planting in Jubilee Park** - During the September Monthly PC meeting, the PC agreed on the variety of trees, location and cost. A meeting took place in October with external parties to survey the location suitability. The bare root trees have now been ordered and we are expecting delivery early 2024.

**Gym Equipment Trail** – the application for use of s106 funds has been submitted and once approved, the Parish Council will go out to tender for the equipment with the aim of getting it installed late spring.

Keep up-to-date with us on our FB page and website.

I sincerely wish everyone a very Merry Christmas and here's to a wonderful 2024.

Best regards

Georgie Fincham, Chair of Weston Turville Parish Council

*Merry Christmas from  
Weston Turville Parish Council*

## Traffic Calming Proposal

Road safety and speeding traffic are a concern of many residents. Some traffic calming for the parish is planned as part of the Hampden Fields development but the Parish Council has been investigating options for other measures.

There are already white gates in situ in Brook End and the PC is submitting an application for funding to the Wendover Community Board for white gates at other entrance points to the village – Worlds End Lane, Marroway, New Road. The Parish Council will need to match fund these gates and funding for this will come from reserves set aside for road safety. As well as needing to meet the criteria for the Community Board grants, permission for the installation of gates will also be required from Buckinghamshire Council Highways who will assess if they are suitable for these roads.

Gateways are used to highlight the change from a rural road to a more populated area. A popular type of gateway replicates a five-barred farm gate. These can often be fitted with a village or town nameplate and can include road surface treatments as per the photo below.

Community Support is vital for all traffic calming initiatives and we are inviting your comments regarding this proposal – do you support it, do you have concerns?

**Please contact the Parish Council with your comments by 5<sup>th</sup> January 2024 – [clerk@westonturville-pc.gov.uk](mailto:clerk@westonturville-pc.gov.uk).**





## CONSULTATION - Civic Insignia for Weston Turville?

Following attendance at a recent civic function it was noticeable that Weston Turville's Parish Council Chair was the only one not to be sporting a Chain of Office, or Civic Insignia to give it its proper name. It occurred to me at the time that, by not wearing the 'club badge' the individual was, at the very least, looked down upon in the eyes of her peers but at worst that the entire parish would be considered '2nd division'.

Insignias themselves date back to the middle ages and were originally of ornate gold chains from which hung a badge or 'device'. Early chains, known as Livery Collars, often consisted of a series of S shaped links which subsequently became known as Collars of Esses. Such chains grew in popularity through the 14th & 15th centuries and were frequently given by royalty to returning adventurers and other individuals of note. The 16th century saw 'collars' become marks of office and continue to be so to this day.

A majority of English, Welsh & Irish authorities provide their Mayor or Chairperson with a Civic Insignia collar whilst in Scotland the Provosts enjoy the same privilege. Such collars remain the property of the authority and pass from chairperson to chairperson in turn.

If agreed, Weston Turville's proposed insignia will be a tasteful yet modest affair with a custom made badge replicating the village sign in Worlds End Lane suspended on a ribbon. It will only be used by the incumbent individual of the time at appropriate civic functions. At all other times kept safely under lock and key!

The cost, around £500 which - even if it only lasted 20 years (although a neighbouring parish's is approaching its 60th birthday!) - would equate to an annual cost of £0.008 per resident.

Why the village has never had a Chain of Office is a question I cannot answer, but hopefully together we can correct this.

The Parish Council would welcome everyone's thoughts. Please send your feedback to [clerk@weston-turville.pc.gov.uk](mailto:clerk@weston-turville.pc.gov.uk)

*Cllr Martin Watson*



*Example of a badge of office*

## Meet your Parish Councillors



**Cllr Georgie Fincham**  
**Chairman**



**Cllr Martin Watson**  
**Vice Chairman**



**Cllr Mark Baylis**



**Cllr Rachel Blackmore**



**Cllr Mike Collins**



**Cllr Laura Cook**



**Cllr Saryo Dawkins**

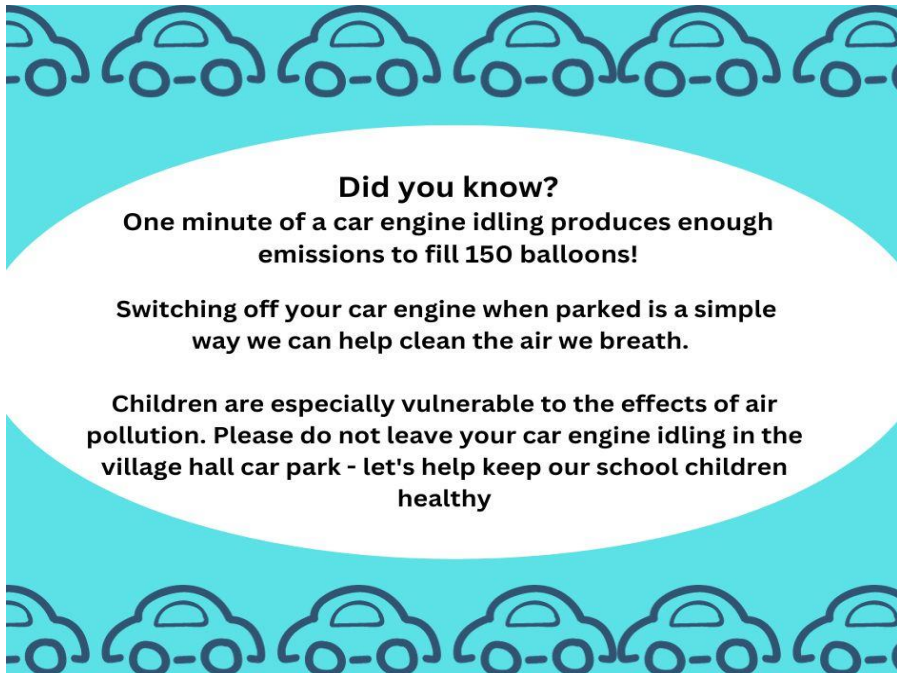


**Cllr Martin Jarvis**



**Cllr Cathy Terry**

There is currently a vacancy for a parish councillor, please contact the Clerk if you are interested in applying.



### **Did you know?**

**One minute of a car engine idling produces enough emissions to fill 150 balloons!**

**Switching off your car engine when parked is a simple way we can help clean the air we breath.**

**Children are especially vulnerable to the effects of air pollution. Please do not leave your car engine idling in the village hall car park - let's help keep our school children healthy**

**Parish Council Meetings** All local residents are welcome to attend meetings of the council and its committees to observe and at the start of each meeting there is a chance for residents to raise any issues with the Council. The list of meeting dates can be found on the website or noticeboards. Meetings are held in either the Village Hall or the parish meeting room, adjacent to the hall. Please see our website for agenda details or contact the Clerk.

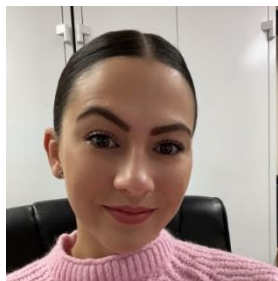
### **Contacting the Parish Council**

Email: [clerk@westonturville-pc.gov.uk](mailto:clerk@westonturville-pc.gov.uk) Tel: 01296 612838

Weston Turville Parish Council, Village Hall, School Approach, Weston Turville HP22 5RW

Parish councillor contact details can be found on our website or noticeboards.

### **Welcome to our new member of staff – Francesca Beato**



Francesca joined the Parish Council as Assistant Clerk in August, she is working alongside our Clerk, Sarah Copley.

Hi, I'm Francesca the new assistant clerk. I'm really enjoying my new role. I look forward to learning more about the local area, the work of the Parish Council and meeting the local residents.



BESPOKE  
**WINDOW SOLUTIONS**  
HERTS • BEDS • BUCKS BERKHAMSTED

**Replacement Sealed Units | General Glazing | Mirrors | Locks & Handle Repairs | Window Films**

Bespoke Window Solutions Berkhamsted is a joint venture with Amber Signs Berkhamsted & Paul Delaney. Paul has over 35 years experience in glazing, both residential & commercial. Amber signs has been providing window film solutions for over 20 years.



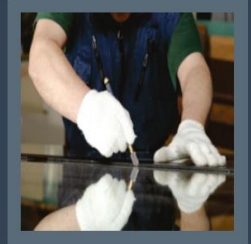
**GENERAL  
GLAZING  
CAT FLAPS  
INSTALLED**

**Replacement Sealed Units**



**Locks & Handle Repairs**

Our skilled engineers can solve many problems to your existing doors & windows.



**Bespoke Cut Glass & Mirros**

We offer made to measure glass for all purposes Inc tables, backsplashes & more.

☎ 01442 915 915    [www.bwsb.co.uk](http://www.bwsb.co.uk)    ☎ 07970 920 241

**J Brown Funeral Services**  
**Independent Family Funeral Director**  
[Jbrownfuneralservices.co.uk](http://Jbrownfuneralservices.co.uk)

Serving Wendover, Aylesbury, Weston Turville, Amersham, and all surrounding areas.

Funeral Director Jason Brown has over 25 years experience and is here to assist you with making funeral arrangements, be they traditional, green or totally bespoke.



The Buckinghamshire ★  
*Business Awards*  
**WINNER**  
Excellence in Customer Service  
award 2021



**Amersham**

67 Woodside Road, HP6 6AA  
**01494 727474**

**Wendover**

23 High Street, HP22 6DU  
**01296 312222**



# Ashridge

HOME CARE



## Providing Outstanding Home Care

Ashridge Home Care specialises in providing one to one care in the comfort of your own home. We can arrange for trained professional carers to give you around the clock care, companionship and support so you can stay in the home you have lovingly created. We offer full time live-in care or a minimum of two hour daily visits.

**Call for a friendly chat on 01494 917344  
or visit [ashridgehomecare.co.uk](http://ashridgehomecare.co.uk)**



# The Glebe Field – Right of Way update

Works took place early October to widen the right of way across the field in order to make the path more accessible. Dead blackthorn has been cut back to allow more light to the path and allow people to walk through comfortably.

Cllr Cook was joined by Chiltern Rangers and volunteers from the village, our sincere thanks go to all those who gave up their time to help out.



Further wildlife surveys will be carried out in order to establish the wildlife currently at the site before any other pathways are considered across the field. Any works carried out will be solely for maintenance purposes.

*Cllr Laura Cook*

## Seasoned Logs

**Suitable for open fires and log burners**

Large builders bag or  
smaller sack

**Church Farm**

Weston Turville

Tel: 01296 613424





## WESTON TURVILLE VILLAGE HALL

Spacious main hall with disabled facilities

Sound system (with hearing loop)

Pull-down projector screen

Separate meeting room also doubles as a  
catering/bar area

Kitchen with cooker and microwave

Car Park with easy access

For availability click on the 'Online Booking' page on our website -

[www.wturvillehall.weebly.com](http://www.wturvillehall.weebly.com) or call 07470487617

Registered Charity 268961



## Weston Turville u3a learn, laugh, live

When I try to extol the virtues of the u3a movement, the reply is often "Never heard of it" or "What's it all about?" So I can enlighten them by saying the organisation was formed in 1981, has over 1,000 branches throughout the country and a membership well in excess of half a million. It is an opportunity for retired and semi-retired people to learn new skills, develop interests, make friends and, most importantly, have fun.

Here in Weston Turville we have one of the biggest branches in the area with over 400 members and almost forty interest groups varying from crafts to theatre visits and from gardening to wine appreciation. There is a general meeting on the fourth Thursday of the month at Aylesbury Rugby Club in the village and prospective new members are welcome to come along for refreshments and to enjoy an entertaining speaker.

Interested? Then contact Simon Evers on 07859 221109 or email  
[membership@wtu3a.org.uk](mailto:membership@wtu3a.org.uk) or visit our website:

[www.wtu3a.org.uk](http://www.wtu3a.org.uk)





You are invited to

# Weston Turville Christmas Carols



Friday | 6:00  
8th | pm  
Dec

Weston Turville Village Hall  
School Approach,  
Buckinghamshire  
HP22 5RW





# **BE BRIGHT BE SEEN**

**NOW THE CLOCKS HAVE GONE BACK AND THE NIGHTS ARE DRAWING IN, IT'S MORE IMPORTANT THAN EVER TO MAKE SURE YOU CAN BE SEEN WHEN YOU'RE OUT AND ABOUT, ESPECIALLY NEAR ROADS.**

**THERE ARE THINGS YOU CAN DO THIS WINTER TO MAKE YOURSELF BE SEEN**

- **TRY AND WEAR SOMETHING BRIGHT AND REFLECTIVE.**
- **CHOOSE A BAG OR RUCKSACK WITH HI-VISIBILITY STRIPS OR ACCESSORISE WITH CLIP-ON REFLECTORS.**
- **WEAR REFLECTIVE SASHES, VESTS OR ARMBANDS OVER COATS OR JACKETS.**
- **IF YOU WALK YOUR DOG IN THE DARK CONSIDER REFLECTIVE ACCESSORIES FOR YOUR DOG COLLAR, LEAD OR HARNESS.**

**IF YOU CYCLE IN THE DARK REMEMBER IT IS LAW THAT YOUR BIKE MUST HAVE WORKING LIGHTS.  
(A WHITE AT THE FRONT AND A RED AT THE REAR).**

**ADDING ADDITIONAL REFLECTORS, SUCH AS SPOKE REFLECTORS AND REFLECTIVE TAPE, CAN ALSO HELP YOU BE SEEN BY OTHER ROAD USERS AND PEDESTRIANS.**

**TRY TO WEAR BRIGHT AND IF POSSIBLE REFLECTIVE CLOTHING**

**STAY SAFE AND HAVE A WONDERFUL CHRISTMAS**

HillierHopkins

Chartered Accountants  
and Tax Advisers



## A helping hand to keep you on track

Friendly expertise for business owners. For advice on bookkeeping, accounts, tax, customs & excise and business advisory, talk to us today.

0330 024 3200  
[hillierhopkins.co.uk](http://hillierhopkins.co.uk)

Watford London Milton Keynes

Independent  
member of



Create your bespoke  
Xmas gift hamper!

**Buckmoorend**  
farm shop butchery kitchen



Browse our Xmas  
display in store now!

Order your turkey  
& home reared  
Christmas Meats  
while stocks last!

Chequers Estate | HP17 0UT  
Tuesday - Sunday 10am-4pm  
[www.buckmoorendfarm.co.uk](http://www.buckmoorendfarm.co.uk)

## “JOB DONE GARDENING”

From the first grass cut to continued garden maintenance (weekly, fortnightly, monthly or ad hoc basis).

We are a team of ladies who will transform your garden in no time and will continue to call as regularly as you want us to

*LET US DO THE HARD WORK  
AND LEAVE YOU TO DO THE  
POTTERING!*

**PLEASE CALL ALISON  
PROBETS ON 07754 207258**



**BERTIE**

AND FRIENDS BUCKS

Bertie and Friends Bucks is a professional pet sitting and dog walking business based in Weston Turville.

Email - [bertieandfriendsbucks@gmail.com](mailto:bertieandfriendsbucks@gmail.com)

Phone - 07841699873



#bertieandfriends\_bucks

[www.bertieandfriendsbucks.co.uk](http://www.bertieandfriendsbucks.co.uk)

FULLY INSURED

FULL DBS - CANINE FIRST AID TRAINED

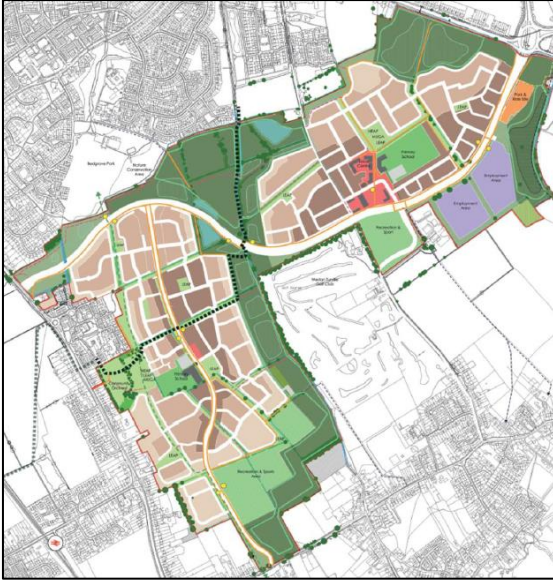
**theWI**  
INSPIRING WOMEN

1915 FOR 100 YEARS 2015

The WI is the largest voluntary women's organisation in the UK. It plays a unique role in supporting and enabling women of all ages to meet in the local area, develop new skills and share ideas. There is also the opportunity to discuss issues that matter both on a national and local level. How much you get involved is entirely up to each person.

The Weston Turville WI branch welcomes women of all ages and backgrounds to our friendly local group. For further information, please contact [westonturvillewi@gmail.com](mailto:westonturvillewi@gmail.com)

# Hampden Fields Update



The Parish Council are meeting monthly with Taylor Wimpey in order to keep abreast of developments. A page has been created on our website which will be updated regularly.

The latest timeline provided to us in November is below, please be aware that these dates are subject to the planning process and may change.

- Nine planning applications have now been submitted, with a further four due to be submitted over the next few months and will include:
  - The first phase of the residential parcels in the Eastern neighbourhood.
  - The Southern Loop Road (Central section), which will include the North and South sections of the New Road Diversion through the proposed Local Centre.
  - A temporary junction on the Southern Link Road and New Road.
  - A temporary haul road from Aston Clinton Road to the proposed residential parcels in the Eastern Neighbourhood.
- The design code process is nearing completion, with the final design code due to be formally submitted in December 2023.
  - The design code for the local centre is due to be submitted in early 2024.
  - The final design code for the employment land will be submitted in late 2025.
- Archaeological works have been delayed and are due to start on site in November 2023 and will last for approximately four months. There will be further archaeological works planned for 2024, which are likely to last until around 2025.
- We currently anticipate that work will start on site in Q2 2024.
- Traffic calming works in Weston Turville and Bedgrove are due to start in early 2026.
- A way forward for the health centre has now been agreed with the NHS's Integrated Care Board, which will see an increase in the site area. This larger health centre will accommodate the additional impact from adjacent development areas and be located in the Local Centre



# RJW Carpet & Upholstery Cleaning Ltd

A Small Family Run Business Cleaning  
Carpets and Upholstery at a Reasonable  
Price

For A Cleaner Home, Just Pick Up The  
Phone



For A Free No Obligation Quote Call Tony On  
01296 482536 07850 130536  
[rjwcarpets@yahoo.co.uk](mailto:rjwcarpets@yahoo.co.uk)



Matt Raden Podiatry

## Expert care for your feet and lower limbs.

Professional, effective and personalised  
treatment call **01296 872809** or visit  
**[mattraden.co.uk](http://mattraden.co.uk)**

General Podiatry | Foot Pain | Sports Injuries  
Toenail Surgery | Diabetic Foot Care | Home Visits

2 Main Street, Weston Turville, Aylesbury, HP22 5RR



# Weston Turville Allotment Association 2024

Create your very own fruit & veg  
basket



“The place to be”

Join the great outdoors

Contact – [wtaacommittee@gmail.com](mailto:wtaacommittee@gmail.com)  
Plots available for immediate viewing

## Albany Carpets

- Established for more than 35 years
- Largest Carpet Stocklists in North Buckinghamshire.
- Cash n' Carry available to help you save money
- Domestic & Commercial flooring specialists
- Karndean & Amtico designer flooring
- Friendly, Efficient and the Best service around.

PHONE NOW FOR YOUR FREE QUOTATION

7 Buckingham St., Aylesbury

(01296) 423593 OR 485957

**MASSIVE SELECTION OF RUGS, REMNANTS AND END OF ROLLS**

# P. KERNAN TREE SURGERY



All aspects of tree work undertaken.  
Hedges maintained. Fully qualified-Fully insured.  
Local authority approved: Free estimates.  
Firewood for sale.

**Tel: 01296 330501 Direct: 07763 073663**

94 Tring Road, Wendover, HP22 6NX

[www.pkernantreesurgeons.com](http://www.pkernantreesurgeons.com)

[patrick.kernan1@gmail.com](mailto:patrick.kernan1@gmail.com)



## Chris at Cathy's

Hairdressing

3 New Road  
Weston Turville  
HP22 5RE

Open Tuesday, Thursday,  
Friday and Saturday

Phone: 07423 057871  
or 01296 613763

## JAZZERCISE

### FITNESS FOR EVERYONE



Bedgrove Infant School  
Tuesday, Wednesday,  
Thursday 7pm

Jubilee Hall, Bierton  
Sunday 9.30am & 10am

"Jazzercise is the most fun way to keep fit and make new friends. I love how motivational the instructors are"



### BOOK YOUR FREE TRIAL NOW!

[www.jazzercisebbh.com](http://www.jazzercisebbh.com)  
[jazzercise1@hotmail.co.uk](mailto:jazzercise1@hotmail.co.uk)  
Call Keri on 07900 987230  
@JazzerciseBedsBucksHerts



# THE **GYM** AT **HALTON**

## Start training today

We are open and welcoming new members at 'The Gym at Halton'. Located at the beautiful Halton Tennis Centre, our gym benefits from outdoor training areas and plenty of equipment.

It's simple and easy to join - enquire today!

Our priority is to provide a safe and welcoming gym, so membership is currently restricted to 400 members.

To arrange a visit, please contact Camilla at [camilla@haltonuk.com](mailto:camilla@haltonuk.com) or 07748 596607



**Membership**  
Full: £55  
Student: £30  
(per month)

[thegymathalton.co.uk](http://thegymathalton.co.uk)



# UNSCRAMBLE THE TEN CHRISTMAS CAROL TITLES TO HELP THE CHOIR

1. TEN HILT SIGN
2. GRADE HENS THANK HILL GEARS
3. MR MEN GET STYLE ON GREY DEER
4. FOIL THEM ALL YOU FACE
5. MET BELOW ON THE HOTEL LIFT
6. GAIN A WEARY MAN
7. HE GREW KITENS
8. WE TRY TO HOLD JO
9. LET IN THE ORFS
10. SET CHALK HELD



*Answers at the bottom of page 28*



## WESTON TURVILLE HISTORICAL SOCIETY

For information and enquiries, contact:  
secretary@WTHSoc.org.uk

As we are just entering winter the WT Historical Society remains in full mode and we have some very interesting talks to help get through those dark winter's nights. The first 2 meetings of the 2023/2024 meetings have been well attended and we have a few new members which is always nice to see. Tony Irvine, our Chairman, has arranged the programme of talks up to and including June 2024 and these are shown in the table below. We will continue to renew membership for existing members and also welcome any new members.

If you wish to renew your membership or to join the society the fees are £5 for a family membership and £3 for a single membership and the meeting fee of £2 per member and £3 for non-members for the coming year. Doors open at 7:30pm and coffee/tea will be available.

If you have not come to any of our meetings, please come and join us on the last Friday of each month in the Village Hall.

For existing members and non-members, we can recommend that you have a look at our website, [www.WTHSoc.org.uk](http://www.WTHSoc.org.uk). The site contains a great deal of information about the history of Weston Turville, copies of old postcards, links to other relevant historical sites etc.

### Date for Weston Turville Historical Society Speaker Programme 2023/2024

Date	Speaker	Title of Talk
No Meeting in December		
January 26 <sup>th</sup> 2024	Adam Smith	The Rothschilds and the Vale of Aylesbury
February 23 <sup>rd</sup>	Paul Robbins	Great British Eccentrics
March 29 <sup>th</sup> Good Friday No Meeting		
April 26 <sup>th</sup>	Neil Rees	King Louis XVIII and the French royal family at Hartwell House
May 31 <sup>st</sup>	Liz Wooley	Subject to be confirmed but may tie-up with a guided walk in June or July
June 28 <sup>th</sup>	Adrian Randall	AGM + Weston Turville Criminality – Part 1

### Contact

For further information on the Society, visit [www.WTHSoc.org.uk](http://www.WTHSoc.org.uk), or email: [secretary@WTHSoc.org.uk](mailto:secretary@WTHSoc.org.uk). New members and visitors welcome.

# CHRISTMAS

AT WADDES DON

22 NOV - 1 JAN 2024



SHARE A MAGICAL DAY OUT  
WITH NEW ILLUMINATED MANOR  
PROJECTIONS AND LIGHT DISPLAYS

BOOK YOUR VISIT  
[WADDES DON.ORG.UK](http://WADDES DON.ORG.UK)



WADDES DON

 National Trust

# What's on in your local area

## December

22 Nov-17 Dec	Waddesdon Christmas Fair
December	Santa's Grotto at Dobbies,
2 <sup>nd</sup>	Wendover Christmas Lights, 4-7pm
8 <sup>th</sup>	"Santa's Quiet Grotto" at Dobbies
8 <sup>th</sup>	Christmas Wreath workshop at Lindengate, 10am
8 <sup>th</sup>	Christmas Carols at the Village Hall, 6pm
14 <sup>th</sup>	Parish Council Planning Committee, 7pm
16 <sup>th</sup>	Ellesborough Silver Band at Local Produce Market, Wendover 10-2pm
22 <sup>nd</sup>	Carols around the tree, Wendover Manor Waste, 6.30pm

## January

11 <sup>th</sup>	Parish Council Planning Committee, 7pm
13 <sup>th</sup>	Farmer's Market, Wendover
14 <sup>th</sup>	Wished for Wedding Fair, Holiday Inn
18 <sup>th</sup>	Parish Council meeting, 7pm
20 <sup>th</sup>	Local produce market, Wendover
26 <sup>th</sup>	Weston Turville Historical Society at the Village Hall

## February

9 <sup>th</sup>	Parish Council Planning Committee, 7pm
10 <sup>th</sup>	Farmer's market, Wendover
16 <sup>th</sup>	Parish Council meeting, 7pm
17 <sup>th</sup>	Local Produce Market, Wendover
23 <sup>rd</sup>	Weston Turville Historical Society at the Village Hall
24 <sup>th</sup>	Parish Litter Pick - Climate Action Weston Turville

## Regular Events

- Monday afternoons – Coffee Van at the Village Hall
- Tuesday afternoons – Warm Spaces at the Chandos
- Second Saturday monthly – Repair Café, St Michael's Church, Aston Clinton 9am - 12noon
- Thursdays – Wendover Market





Suppliers and installers of the highest quality  
Windows, Doors, Orangeries & Conservatories

Visit our Showroom or contact us for a free no obligation quote:  
19 Bridgegate Business Park,  
Gatehouse Way, Aylesbury,  
HP19 8XN

**Tel: 01296 422842**

[enquiries@premwindowsanddoors.co.uk](mailto:enquiries@premwindowsanddoors.co.uk)  
[www.premwindowsanddoors.co.uk](http://www.premwindowsanddoors.co.uk)

## The JoAnn Latus School of Dance



- ❖ Established 24 years
- ❖ Ballet, Tap, Modern and Jazz dance
- ❖ For all ages from 3 years upward
- ❖ Regular examinations & shows.
- ❖ Fully qualified teachers.
- ❖ Local classes held in Weston Turville, Aston Clinton and Stoke Mandeville

[www.jolatusdance.co.uk](http://www.jolatusdance.co.uk)  
01462 769 665 or 07800 518 654

**NOW REOPEN FOR BUSINESS**



### **EXTERNAL CLEANERS**

*WORKING IN YOUR AREA*

- ✔ WINDOWS
- ✔ GUTTERS
- ✔ FASCIA & SOFFITS
- ✔ PRESSURE WASHING
- ✔ AND MORE...

**CALL FOR A QUOTE**  
**07377 117 606**

[info@dfclean.co](mailto:info@dfclean.co)  
[www.dfclean.co.uk](http://www.dfclean.co.uk)



### SILENT NIGHT

HARK THE HERALD ANGELS SING  
GOD REST YE MERRY GENTLEMEN  
O COME ALL YE FAITHFUL  
O LITTLE TOWN OF BETHLEHEM  
AWAY IN A MANGER  
WE THREE KINGS  
JOY TO THE WORLD  
THE FIRST NOEL  
DECK THE HALLS

## St Mary's Church, Weston Turville



November holds the Church's season of Advent which leads us to Christmas and then we head into the New Year.

The word advent means coming or arrival so the Church await the arrival of Christmas, when Christ came to us. Jesus, born a baby, grew to maturity and was crucified before being resurrected, so as well as looking forward to celebrating His Birth we look forward to the end of time when God will wrap everything up and we'll enjoy being in heaven. We do not know the time of this event although all sorts of people have heralded it's coming it's not happened yet in that way.

BUT.... Of course having been born into our world, lived, died and being resurrected Christ is the One who always comes to us, each day, each week, each month, each year and each moment any of any time period you can think about. The difference He makes is complex.

Jesus was born into a violent world where corruption was a fact of life, the poor exploited and the rich getting richer; does this sound familiar? Yes it is our world into which Jesus was born and it's our world where He is still present.

Jesus is a wonderful person, the fulness of God (we say he is the Incarnate (in the flesh) Lord), and he loved and loves and will go on loving. The problem in our world is us; we human beings, who by and large do not take much notice of God and the ways of God. Yes, we might do our bit locally, but universally we mess up and there are and will be wars, famine, global warming, cruelty and so the list goes on. There is also, however, much kindness, generosity and care for each other no matter how near or far away.

Into our word let us welcome again the Saviour of the World, listen again and afresh to his call for us to love our neighbour and be refreshed that in the mess of life the fullness of God dwells for the love of you.

Fr. David

## Christmas trees



## Warm spaces

We would love you to consider buying rooted Christmas trees this year so that you can reuse them next year. Weston Turville and Halton have been planning a Christmas tree rental scheme which would enable villagers to rent a tree and return it after the festive season and re rent it the following year.

Over 8 million Christmas trees are cut down each year in the UK which is ironic when you hear of the importance placed on planting trees in Britain. By buying a living tree, keeping it watered and fed throughout the year and then reusing it the following year, we can all help reduce the number being felled.

To enable the scheme to take off we will need a supply of trees. This will take time and planning and will involve people donating their tree to the scheme. Initially, it would be interesting to see how many parishioners would be willing to buy a live tree and to care for it in their own (or a friend's) garden.

If you do buy a rooted tree in a pot, place the pot inside a larger pot with no drainage holes, to allow you to water without damage to floor or furniture. It can then be put outside for the rest of the year. Being in a pot will curb its growth so that it is unlikely to have increased too much in height in 12 months, but if it has outgrown your house ask around to see if someone else would like to accommodate it the next Christmas.

Merry Christmas

George Lait & members of warm spaces - [georgelait@hotmail.co.uk](mailto:georgelait@hotmail.co.uk)



# CHANDOS ARMS

EST. 1842

Our treasured Local Village Pub

Proud to offer a family friendly feel service, with homemade freshly prepared food locally sourced.

We offer a full range of dishes including pub favourites which can be found on our website or Facebook page, along with our opening times which may vary seasonally.

We look forward to you dining with us, or pop in for a social drink.

1 Main Street HP225RR [www.thechandosarms.co.uk](http://www.thechandosarms.co.uk) Tel: 01296613532 FB@thechandos

## Warm spaces

At

## The Chandos arms

Every Tuesday afternoon from **13.30 to 15.30**

Our host, Stewart, will serve complimentary teas and coffees.

Warm spaces started in November 2022 and continues to grow.

All welcome, dog friendly

For more detail contact – [georgelait@hotmail.co.uk](mailto:georgelait@hotmail.co.uk)



# COMPUTER TROUBLE?



## WENDOVER COMPUTERS

Back Street, Wendover 01296 200275

*Do you feel like throwing your computer out of the window?  
fed up with it going slow?  
Crashing or freezing?  
Strange messages popping up?  
or would you just like to upgrade?*



Come and check out the Wendover Computers refurbished station. We stock iPads, iPhones, iMacs, Macbooks, PCs and Laptops



Speed up your slow Computer with an SSD  
Significantly improve the performance of computer by upgrading the old HDD



iPhone & iPad repairs anything from smashed screens to battery replacements



Brand new Laptops  
Windows 11  
SSD

**From £449**

help@wendover-computers.co.uk  
www.wendover-computers.co.uk



# Reduce your gas and electricity bill !



Good news that UK electricity and gas prices have been falling over the last few months. Choosing the best tariff and supplier can save you £100s per year and moving to a renewable energy supplier also helps the planet.

Current advice on the market, including from Martin Lewis, is if any firm, including your current one, offers a fixed energy tariff for under the new price caps, that looks like a decent deal. Weston Turville is in the Eastern region, so the price cap until end of this September was 30.7p per kWh for electricity and 7.4p per kWh for gas. From 1 October the cap falls to 27.9p and 6.8p respectively. Other types of tariff might be better depending on your energy usage if you have an electric vehicle (EV) or can shift your use of electricity. These include the Agile time of use tariff from Octopus and cheap overnight tariffs for EV users such as Electric Driver from British Gas and Intelligent from Octopus.

But who do you go with, especially as price is only one factor in choosing a supplier? The top six overall from Which, the independent review organisation, are Octopus Energy, Utilita, Utility Warehouse, Co-op Energy, E and Ovo Energy. You can compare energy providers and find the right tariff for you by using comparison websites where you can also filter on green or renewable deals.

Some people are put off moving energy suppliers to get the best deal, due to stories about perceived difficulties of moving companies, having a smart meter installed if you don't have one and possible billing problems. The following companies have signed up to the Energy Switch Guarantee which sets out assurances on timescales and billing during a switch:

- E.ON
- EDF
- Octopus Energy
- Outfox the Market
- Shell Energy
- SO Energy
- SSE.

Ben Brownlee  
Climate Action Weston Turville

## Mini Iced Christmas Puddings

[for those of us who don't like fruit Christmas puddings]

- Finely grated zest 1 clementine + 3 tbsp juice
- 5 tbsp golden rum
- 140g / 5oz golden caster sugar
- 85g / 3oz mix dried cranberries and raisins
- 25g / 1oz cut mixed peel
- 2 x 150g cartons light Greek yoghurt
- 142ml double cream
- 50g / 2oz white chocolate, melted and piped into star shapes [or just buy them already made!]

1. Line four 200ml / 7fl oz moulds with cling film, leave an overhang.
2. Heat the clementine juice with the rum and sugar until dissolved .
3. Tip in dried fruit, simmer for 2 minutes. Stir in the mixed peel and zest and leave until cold.
4. Beat the yoghurt until smooth, softly whip the cream and fold into yoghurt.
5. Measure off 4 tablespoons of the fruit and syrup and freeze. Stir the rest into the yoghurt mixture. Spoon into the pudding moulds, cover with the cling film, the foil.
6. Freeze [for up a month].
7. Thaw the puddings in the fridge for 1 hour, tip them out and remove the lining. Serve with the thawed fruit and syrup and a chocolate star.

Thanks to Sian Lorimer-Jarvis for sharing her recipe

# VILLAGE ENVIRONMENTAL SERVICES DOMESTIC DRAIN SERVICES

Proprietor: Dennis Cook  
Est. 1979

**24/7  
CALLOUT  
SERVICE**

# BLOCKED DRAINS?

# CALL US DAY OR NIGHT

**FAMILY RUN BUSINESS SINCE 1979**

**BLOCKED DRAINS CLEARED • REASONABLE RATES**

**NO EXTRA CHARGE FOR EVENING, WEEKEND  
OR BANK HOLIDAY CALLOUTS**

**CCTV DRAIN SURVEYS**

**FULL PUBLIC LIABILITY INSURANCE**



**07850 635 844**  
**01296 624 221 (MESSAGES)**





# **VOLUNTEERS NEEDED!**

**FRIENDS OF WENDOVER HEALTH CENTRE  
IS LOOKING FOR VOLUNTEER DRIVERS  
AND CHARITY RECEPTION DESK  
VOLUNTEERS**

Friends of Wendover Health Centre is a charity dedicated to providing transport for patients of the surgery to attend healthcare appointments.

**For more information please email  
[friendsofwendoverhealthcentre@outlook.com](mailto:friendsofwendoverhealthcentre@outlook.com)**

**Or call  
01296 622565**





## USEFUL CONTACTS

Allotment Association	wtaacommittee@gmail.com
Aston Clinton Surgery	01296 630241
Bedgrove Surgery	01296 330330
Buckinghamshire Council	01296 395000
Citizens Advice	0344 411 1444
Crimestoppers	0800 555 111
Electricity Emergency (UK Power Networks)	0800 783 8838
Environmental Health out of hours	01296 585093
Gas Emergency	0800 111 999
Hospital – Amersham	01494 434411
Hospital – High Wycombe	01494 526161
Hospital - Stoke Mandeville	01296 315000
NHS Direct	111
Transport for Bucks	01296 395000
Village Hall, Weston Turville	07909 485369
Wendover Health Centre	01296 623452
Wendover Library	01296 382415
Weston Turville Combined School	01296 613436
Weston Turville Parish Council	01296 612838
<b>Bucks Council Councillors</b>	
Clr Bill Chapple OBE	01296 426814
Clr Michael Collins	01296 632039
Clr Julie Ward	07766 545236
<b>Support Services</b>	
Age UK	0800 169 6565
Childline	0800 1111
Domestic Violence Hotline	0808 2000 247
Friends of Wendover (weekdays 1-3pm)	01296 622585
Mind	0300 123 3393
Samaritans	116 123

## WHO TO REPORT ISSUES TO

Antisocial behaviour	999 - to report a crime in progress 101 – to report a crime after the fact 01296 383962 Mon-Fri or 0800 999 7677 evenings or weekends – to report concerns about children to Social Services First Response 01296 585858 – to report antisocial behaviour to Buckinghamshire Council
Dog bins (full or damaged)	Buckinghamshire Council - 01296 585858 (please quote the bin reference number eg AV123 which is on each bin)
Environmental Health issues	Buckinghamshire Council - 01296 585858
Fly Tipping	Buckinghamshire Council - 01296 585858
Highways and Rights of Way	Transport for Bucks – 01296 395000 Or <a href="http://www.fixmystreet.buckscc.gov.uk/">www.fixmystreet.buckscc.gov.uk/</a>
Housing and Benefits	0300 131 6000
Litter – missed bin collections, overflowing public litter bins	Buckinghamshire Council - 01296 585858 Or <a href="http://www.buckinghamshire.gov.uk/waste-and-recycling/report-a-missed-bin-collection/aylesbury-vale/">www.buckinghamshire.gov.uk/waste-and-recycling/report-a-missed-bin-collection/aylesbury-vale/</a>
Park and recreation ground	Parish Council – 01296 612838
Planning matters, including enforcement	Buckinghamshire Council - 01296 585858
Street furniture, eg benches, bins, bus shelters, noticeboards	Parish Council – 01296 612838
Streetlights located in Hampden Hall, A413 or A41	Transport for Bucks – 01296 395000 Or report online via <a href="http://www.fixmystreet.buckscc.gov.uk/">www.fixmystreet.buckscc.gov.uk/</a>
Streetlights located in Weston Turville village	Parish Council – 01296 612838
Village Hall	Parish Council – 01296 612838
Water leaks	Thames Water – 0800 714 614



# Christopher Pallet

Professional advice since 1973

CELEBRATING  
**50**  
YEARS

This year we celebrate 50 years selling and letting properties in the village of Weston Turville and the surrounding area.

As a family run business, we have always believed in delivering the highest standards of customer service and making the moving process as stress free as possible.

Book a FREE valuation via our Brand New Website or contact us today to discuss your property requirements.

**[www.christopherpallet.com](http://www.christopherpallet.com)**



## Sales & Lettings

For all your property requirements contact  
[wendover@christopherpallet.com](mailto:wendover@christopherpallet.com)  
or call 01296 625000